



For Immediate Release

Taylor Long, Media Contact
iPhone: 541- 231-969
Email: taylor@portlandstorytheater.com

More information can be found at: <http://www.portlandstorytheater.com>

Lawrence Howard in Shackleton's Antarctic Nightmare

January 11, 17, 18, 24, 25, 2014

Hipbone Studio Theatre, 1847 East Burnside Street, Portland

Photographs: <http://www.lawrencehoward.name/presskit.htm>

Show Website:

<http://www.portlandstorytheater.com/armchairadventurer/shackleton.htm>

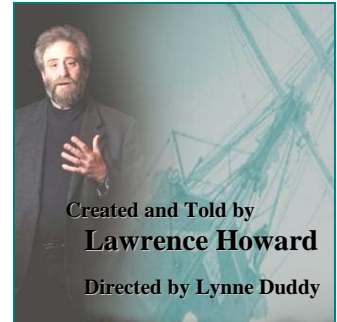
Performance Reviews: Oregon Arts Watch <http://www.orartswatch.org/storytelling-a-wintery-tale-of-amazing-fortitude/>

The Oregonian

<http://topics.oregonlive.com/tag/Ernest%20Shackleton/index.html>

Newspaper Articles: The Tribune <http://portlandtribune.com/pt/11-features/113679-an-enduring-tale>
The Oregonian <http://ow.ly/ecXty>

About Lawrence: <http://www.lawrencehoward.name>



Portland, OR – October 4, 2013 – there are two kinds of people in the world: those who love and are obsessed with the story of Ernest Shackleton, and those who haven't heard it yet. This January, Portlanders will have their chance to join the first category when Lawrence Howard reprises his acclaimed one-man show, "Shackleton's Antarctic Nightmare: The 1914 Voyage of The Endurance." The epic 150-minute production will take place at Hipbone Studio on five nights in January, the 11th, 17th, 18th, 24th, and 25th, 2014 at 8:00 p.m.

This is the gripping, true story of the British Antarctic explorer, Sir Ernest Shackleton, and the 1914 voyage of the ship, Endurance. Shackleton's dream of being the first man to traverse the Antarctic continent from one side to the other became a nightmare when his ship was trapped in the pack ice of the Weddell Sea and crushed by the pressure of the ice. The story of how he and the 27 men of his expedition survived on the ice for over a year and a half and eventually came to safety is an epic tale of hardship, courage, and endurance.

The show is returning to Oregon by audience demand after a successful Off-Broadway show in New York and three sold-out runs in Portland, Oregon. "This show is very near and dear to my heart," says Howard, "because my father and I shared a lifelong passion for the Shackleton story, and I like to weave a few threads about him into the telling."

Lynne Duddy, who directed the show, is one of the co-founders of Portland Story Theater, and has been at the forefront of the emergence of personal narrative as a performance art form since 2001.

Discussing what is so unique and important about long-form personal narrative, Duddy says, "With no set, no script, no costumes, no props, and no fancy lighting, a lone performer holds the stage and singlehandedly creates an entire universe with nothing more than gesture, words and voice. This is a return to the ancient roots of theater. This is theater at its most elemental, most essential core."

Advance tickets are \$15.00 and are available for purchase online at Brown Paper Tickets. For all media inquiries in reference to Shackleton's Antarctic Nightmare please contact Taylor Long, Media Contact, 541- 231-9695 or by email at taylor@portlandstorytheater.com.

###